

SUMMER 2012

WHAT GIVES

News, Issues and Events Shaping Philanthropy
at the Whitley County Community Foundation

Reasons to Give



Perhaps not as entertaining as David Letterman's well-known Top Ten Lists, the Whitley County Community Foundation has an important list of our own. Consider the reasons 1,458 donors chose to make their charitable contributions through our Community Foundation last year:

1. Our focus is local. We know our community well. We work in partnership with community leaders throughout the public, nonprofit, and private sectors to better understand:

- ♦ Our community's needs and priorities,
- ♦ Where there are opportunities for innovative solutions, and
- ♦ Who has the capacity to affect real and lasting change.

2. We bring together community leaders and coordinate resources to provide the greatest community impact. Our grants address a broad range of *changing* local needs - from housing and homelessness, health and human services, education, youth, seniors, the environment and the arts.

3. We connect donors to the causes they care about - whether establishing a new fund or contributing to an existing named fund.

4. We provide a highly personalized and flexible approach to giving. We offer a variety of tools to help people achieve their charitable goals.

We can preserve a donors' intent - even when our community's needs and organizations may change.

5. We accept a wide variety of gifts - including appreciated stock, art, real estate, insurance policies and more. We can facilitate even the most complex forms of giving.

6. We partner with professional advisors to create highly effective approaches to giving.

7. We offer maximum tax advantage under state and federal law.

8. We provide wise stewardship of the gifts entrusted to us. We are known for a sound long-term investment strategy and a prudent spending policy which ensure that the value of donors' charitable funds will continue to grow - to be available to give forward.

9. We leverage the community impact of our donors' gifts by pooling them with other resources and grants.

10. We build endowment ~ a permanent source of community capital that will be available to improve lives and strengthen our community for generations to come. 🌱

what's new with... WHITLEYFORWARD➤



Camp Invention *offered at* **Columbia City High School**



WhitleyForward is partnering with Columbia City High School to offer the nationally acclaimed Camp Invention program to 81 Whitley County children in grades one through six this summer. The week-long camp, spear-headed by CCHS teacher Rachelle Patrick, immerses children in a creative adventure of imaginative play that refreshes and enhances school-year learning in STEM subjects (science, technology, engineering, and math). "This Camp is a perfect fit with WhitleyForward's mission of encouraging STEM education. When Rachelle contacted us about the possibility of underwriting a portion of the costs, we were thrilled to work with her as she is brimming with enthusiasm for the project," said September McConnell, director of the Community Foundation. The program encourages children to be creative and explore new ideas in a project based learning environment that disguises learning as fun!

Examples of the Real World Challenges children will face at this camp:

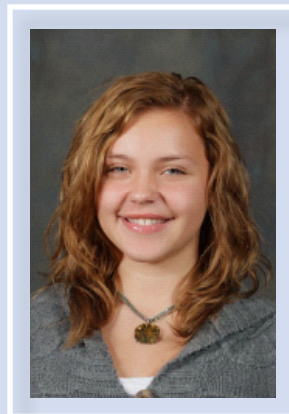
- The CREATE program: Saving "Sludge City." "Green up" a contaminated wasteland and rebuild an eco-friendly city!
- The ENVISION program: "Magnetropolis" Set sail to the magnificent island of Magnetropolis and explore the power of magnetism.
- The ENCOUNTER program: "Lost Treasure" Build shelter, navigate a volcano, decode a message and find the lost treasure!

- The INNOVATE program: "Poweer'd" Bring a motorized creature to life in a secret lab!

A big thank you to Scientific Regulatory Consultants for generously offering to provide snacks for the campers this summer. With community partners like SRC, we know we are on the right track to educating our students for the workforce of tomorrow. 🌱

For more information visit: www.campinvention.org

Eagle Tech Academy Freshman University of Dayton Women Summer Camp for High School



Katarina Junk of Eagle Tech Academy is a participant in a residential program sponsored by the school for young women to career opportunities for sophomores through seniors who are interested in STEM.

"Finally I have a skill I feel I need to practice to do so," said Katarina.

In addition to completing her freshman year, Katarina participated in a Project Lead The Way course at the University of Dayton High School. When Rachelle approached her about the trip to engineering camp we were happy to support the WhitleyForward initiative.



Destination Imagination Team at Churubusco High School WINS!

WhitleyForward helped to send Churubusco's Destination Imagination team to the 2012 Global Finals Competition in the Secondary Level Solar Stage Scientific Challenge and Instant Challenge.

Destination ImagiNation, Inc. is a non-profit organization that provides educational programs for students to learn and experience creativity, teamwork and problem solving. The Destination Imagination program encourages teams of learners to have fun, take risks, focus, and frame challenges while incorporating STEM (science, technology, engineering, and mathematics), the arts, and service learning.

Participants in the program learn patience, flexibility, persistence,

ethics, respect for others and their ideas, and the creative problem solving process. The different team participants solve open-ended Challenges and present their solutions at Tournaments. In the challenges teams are presented with a test where they are required to think on their feet, work together, and devise original solutions that meet

the outlined requirements of the challenge.

On Saturday, April 21, 2012 two high school teams from Churubusco High School competed in the Indiana Destination Imagination State Finals. The team competing in The Solar Stage scientific challenge received first place along with a Renaissance award earning them a spot in the Global Finals competition in Knoxville, TN on May 23-26, 2012.

WhitleyForward

was created to encourage local students to embrace STEM education. Churubusco's Destination Imagination Team is doing just that and we wish them all the best as they represent our community.

Churubusco DI Team results from Global Finals: The team received The Renaissance Award for Outstanding Design and Engineering in their challenge. Each student received a medal and accepted their award before a crowd of more than 18,000 people. They also received 13th place overall for their challenge.



The Churubusco High School Destination Imagination team pictured at the Indiana State Destination Imagination Finals where they received first place and won a Renaissance Award. Pictured from left to right are: Rachel Jones (sophomore), Jenna Shambaugh (junior), Robby Pope (senior), Brandi Herron (senior), Avery Dirr (junior) and Caitie Eakins (senior).

an accepted into the men in Engineering h School Girls

my has been accepted to participate in a six-day
the University of Dayton that introduces high
ortunities in engineering. This camp is for rising
are interested in science, math, or engineering.

o prove and improve, and this camp is my ticket

uman year at Eagle Tech Academy, Katarina par-
y course with Rachelle Patrick at Columbia City
ached the Foundation with a request to help fund
re happy to oblige as the camp is a great represen-
tative to encourage students in STEM fields. 🌱

2012

Whitley County Community Foundation

SCHOLARSHIP RECIPIENTS

Columbia City High School Recipients

Autumn Art Festival Scholarship: Eden Akers
The Bernice Carver Scholarship of Hope: Joni Knott
Betsy Jayne Gates Memorial Scholarship: Michaela Thomas
Bob Brittain Memorial Scholarship: Lacey Jahn, Alissa Sturtevant, Kara Jackson
Columbia City Rotary Scholarship: Madison Smith, Benjamin Fausey, Lacey Jahn
Dan Mullett Scholarship: Mollie Coy
Eric Reed Memorial Scholarship: Ben Fausey
HANDS Foundation Scholarship: Kaylee Parks
Heimbach Award: Michaela Thomas
Howard and Mimi Wherry Memorial Scholarship: Kaylee Parks, Megan Beers
Janice Hammer Academic Team Scholarship: Mercedes Zello, Korinne Hazen, David Purvis-Fenker, Madison Smith, Sam Spencer, Megan Beers
Joseph and Irene Shull Scholarship: Connor Slavich & Lauren Taylor
Joey Devito Memorial Scholarship: Brandon Gay
Kenny Simon Memorial Award: Connor Slavich
Kenny Beck "Changes in Latitude" Scholarship: Marley Rose
Lawrence and Freida Bunnell Scholarship: Kara Jackson, Megan Beers, Mercedes Zello
Lilly Endowment Finalist Award: Kara Jackson
Margaret "Margo" Kaler Langohr Art Scholarship: Eden Akers
Natalie Mason Mullins Scholarship: Lauren Bassett, Megan Beers, Sidney Bunyan, Alissa Sturtevant, Alivia Gruettert, Samuel Spencer, Samara Qureshi
Ohki Scholarship: Samara Qureshi
Randy Bills Memorial Scholarship: Nick Hatfield
Robert Hood Award: Danny Boismier
Scientific & Regulatory Consultants Scholarship: Lacey Jahn
Tiffany Parker Scholarship: Alissa Sturtevant
Tina Parker Awards: *Cross Country*-Carlee Hearld;
Volleyball-Emily Rupp; *Golf*-Lauren Holloway;
Soccer-Brooke Gareiss; *Basketball*-Sarah Opliger;
Swimming-Libby Bower; *Softball*-Cassie Vodde;
Track-Madison Smith; *Tennis*-Blake Farber
Tina Parker Tray Award: Sarah Opliger

Tom Ness Memorial Award: Derek Lamle

Whitley County Korean War Veterans Memorial Scholarship: Blake Farber

Whitley County Art Guild Anne Hamilton Scholarship: Eden Akers

Whitley County Retired Teachers Scholarship: Brianna McCallister

Whitley County Builders' Association Scholarship: Samuel Spencer

Zumbrun Award: *Valedictorian*: Jenee Schneider &
Saledictorian: Micheala Thomas

Whitko High School Recipients

Autumn Art Festival: Danielle Graves

Daniel E. Bolinger Memorial Scholarship: Tanner Nickidemous & Austin Mort

HANDS Foundation Scholarship: Jordan Sims

JAKES Scholarship: Brody Wilson

John Simmions Scholarship: William Cord Feasby

Lilly Endowment Community Scholar: Dylan Cozad

Lilly Endowment Finalist Award: Joshua Wilkinson

Margaret "Margo" Kaler Langohr Art Scholarship: Danielle Graves

The Senator Harold "Potch" Wheeler Memorial Scholarship: Brody Wilson

Whitley County Art Guild Anne Hamilton Scholarship: Danielle Graves

Churubusco High School Recipients

Andrea Norman Henry & John Anthony Norman Theater Scholarship: Caitlin Eakins

Andrew C. Spencer Memorial Scholarship: Christopher Uecker

Ben Konger Memorial Scholarship: Morgan Young

HANDS Foundation Scholarship: Morgan Young

Lilly Finalist Award: Brandi Herron

Megan Christine Young Memorial Scholarship: Haleigh Gross

Turtle Town Players Scholarship: Caitlin Eakins

Non-Traditional Student Recipients

Scientific & Regulatory Consultants Scholarship: Stephanie Weigold & Rachel Gilson

Regional Dashboard Presentation to Whitley County Residents

The Whitley County Economic Development Corporation, the Whitley County Community Foundation, the Community Research Institute at IPFW and the Northeast Indiana Regional Partnership would like to invite you to attend the launch of the Northeast Indiana Regional Dashboard. John Stafford, Director of the Community Research Institute at IPFW and Katy Silliman, Director of Vision 2020 will be presenting the Regional Dashboard at this meeting and will answer any questions that you may have.

WHAT: The Northeast Indiana Regional Partnership and the Community Research Institute (CRI) of IPFW have recently completed a significant tool called the Regional Dashboard to establish a baseline for Northeast Indiana to measure our progress over time on critical success factors as we move forward with Vision 2020 strategies to transform our economy. The Dashboard

compares Northeast Indiana with 14 other 'peer' and 'star' regions whose economies are performing at the same or higher level than our own, using an objective and comparable set of benchmarks. By understanding where our economy stands today and tracking those regions that are outperforming us, we are able to make smarter decisions about our future, focus our resources, and align our strategies based on objective data and best practices.

WHY: Learn about where Northeast Indiana stands in comparison to similar cities/regions across the country. Discover how we will use this set of common data to track the region's success over the coming years

WHEN: 3:30 p.m., July 11, 2012

WHERE: Eagles Nest Event Center

Please RSVP to Erica Hahn, Erica@NEIndiana.com or 260.469.3474

Dylan Cozad

Named 2012 Lilly Community Scholar

This Spring, Dylan Cozad was named the recipient of a four-year, full-tuition scholarship as the Whitley County Community Foundation's 2012 Lilly Endowment Community Scholar. He will receive full tuition to the Indiana college of his choice and a \$900 yearly stipend for required books and equipment.

The son of Daniel and Susan Cozad and older brother to Evan Cozad of South Whitley, Dylan plans to major in Actuarial Science at Butler University. During his high school career he has been an active participant on the Cross Country and Track Teams as well as the National Honors Society and numerous club activities. Dylan is the valedictorian of his class at South Whitley High School.

"I am extremely honored to have received this scholarship and excited to be given the opportunity to pursue a quality college education," said Dylan. "I would like to

thank my teachers and coaches who have challenged me academically and athletically and my family for always supporting me."



This year 46 Whitley County applicants participated in the Lilly Endowment Community Scholarship selection process. After the WCCF scholarship committee narrowed the field to four nominees, Joshua Wilkin-son of South Whitley, Kara Jackson of Columbia City, Brandi Herron of Churubusco, and Dylan Cozad of South Whitley, one finalist and one alternate were chosen to be sent to Independent Colleges of Indiana Inc. for the official selection of the recipient.

The scholarships are the result of a statewide Lilly Endowment initiative to help Hoosier students reach

high levels of education. Indiana ranks among the lowest states in the percentage of residents over the age of 25 with a bachelor's degree.

Whitley County has had a total of 30 Lilly Endowment Community Scholarship recipients since the first scholarship was awarded in 1998. The awards have totalled in excess of \$3 million. 🌸

New Scholarship Available

The Randy Bills Scholarship was recently established by Rob Arms of R&D Motorsports to celebrate the life of Randy Bills. A '77 graduate of Columbia City High School, Bills attended a motorcycle industry trade school and went on to start R&D Motorsports in Columbia City in 1981. Bills sold a portion of the company to Rob Arms in 1997 and the balance of the company in 2001. Tragically, during his retirement in South Carolina, an assailant took his life during an auto transaction. Bills left behind three children, Paul, Emily, and Alexandria. His parents are Paul and Betty Bills of Columbia City. Randy is remembered as a very active member of the community who never failed to provide financial support when there was a need.

This scholarship will be awarded annually to a graduating senior from Columbia City High School, planning to attend a two year Mechanical Tech School or a four year college with a Business Major. All applicants must have a GPA between 2.0 and 3.0. CCHS graduating senior Nick Hatfield was recently named as the 2012 Randy Bills Memorial Scholarship recipient. 🌸



OUR MISSION

It is the mission of the Whitley County Community Foundation to champion the spirit of philanthropy and generate permanent endowments. We will assess and address local needs and direct funding to best meet community aspirations.

BOARD OF DIRECTORS

Laurie Steill,
President
Rob Marr,
Vice President
Sharlene Berkshire,
Secretary

Dale Duncan
Greg Fahl
Rhonda Jones
John Lefever
Rob Marr
Aileen Meier
Harold Norman
Bill Overdeer
David Smith
John Whiteleather

STAFF

September McConnell,
Executive Director
Vanessa Bills,
Business Director
John Slavich,
Program Officer
Chelsey Barrell
Administrative Assistant
Terry Moyer,
Passages, Special Projects

OUR OFFICE

400 N. Whitley Street
Columbia City, IN 46725
(260) 244-5224 phone
(260) 244-5724 fax
sepwccf@gmail.com



400 N. Whitley Street
Columbia City, Indiana 46725

Non-Profit Organization
US Postage
PAID
Permit No. 313
Columbia City, IN